



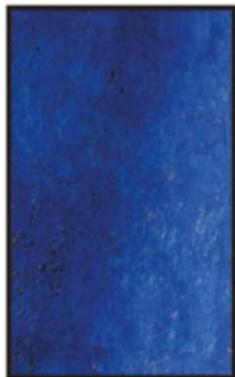
**Sustainable Design Solutions**

***Cork Fabrics colour options***

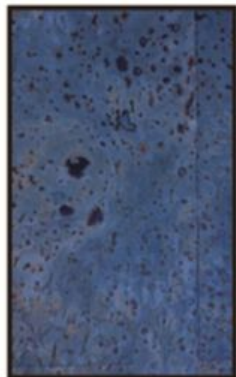
[www.coflora.org](http://www.coflora.org)



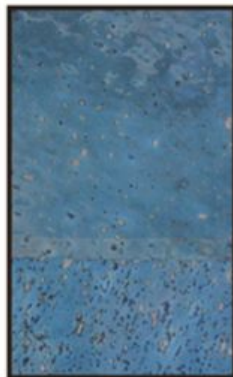
## COLORED CORK



REF. 100 ROYAL BLUE



REF. 100 JEANS



REF. 100 BLUE GREEN



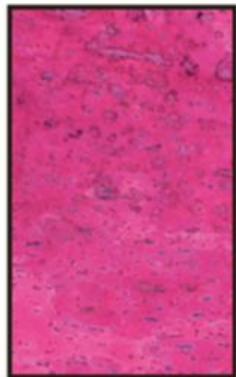
REF. 100 GREEN



REF. 100 EMERALD



REF. 100 RED



REF. 100 PINK



REF. 100 BURGUNDY



REF. 100 ORANGE



REF. 100 COGNAC

## COLORED CORK



REF. 100 COPPER



REF. 100 DARK  
CINNAMON



REF. 100 CHOCOLATE  
BROWN



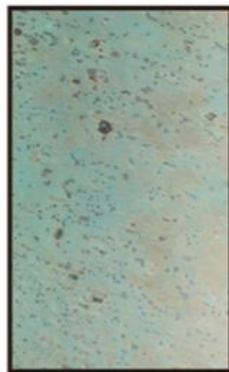
REF. 100 DARK BROWN



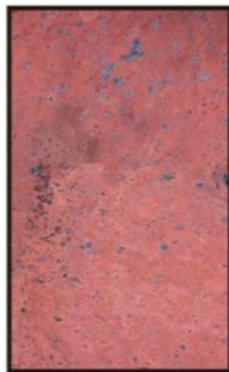
REF. 100 BLACK



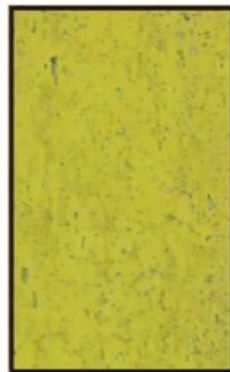
REF. 100 SKY BLUE



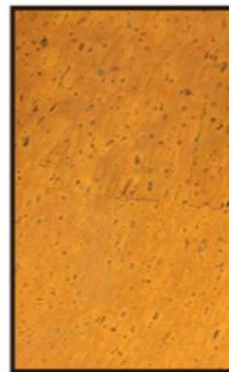
REF. 100 AQUA GREEN



REF. 100 PALE PINK



REF. 100 LEMON YELLOW



REF. 100 MUSTARD



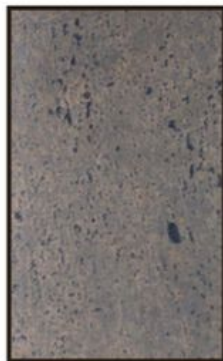
## COLORED CORK



REF. 100 WHITE



REF. 100 WHITE SAND



REF. 100 CHARCOAL



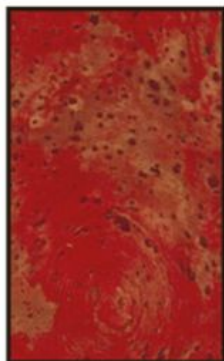
REF. 100 LIGHT GREY



REF. 100 SILVER



REF. 100 GOLD



REF. 100 RED  
WASHED EFFECT



REF. ROYAL BLUE  
WASHED EFFECT



REF. 100 JEANS  
WASHED EFFECT

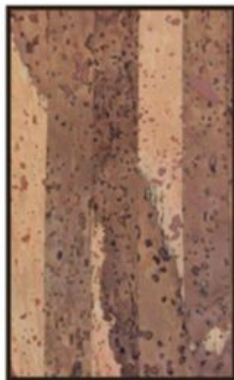


REF. 100 CINNAMON  
WASHED EFFECT

## NATURAL CORK



REF. 1500



REF. 1600



REF. 2000



REF. 2200



REF. 2300



REF. 2600



REF. 3300



REF. 3400



REF. 3900



REF. 4800

## AGGLOMERATED CORK



REF. 3000



REF. 3200



REF. 3500



REF. 4000



REF. 4100



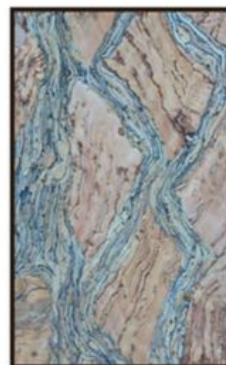
REF. 4200



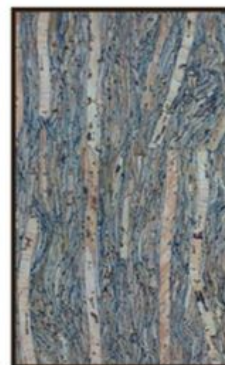
REF. 4200P



REF. 4300



REF. 4400



REF. 4500



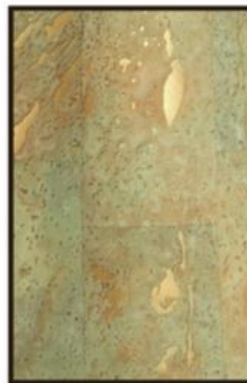
## COLOURED CORK WITH METALLIC BACKINGS



REF. 600 BLACK W/ GOLD  
BACKING



REF.600 PALE PINK W/  
GOLD BACKING



REF. 600 AQUA GREEN W/  
GOLD BACKING

## THE ADHESIVE

We use a water-based adhesive (mixture of copolymer dispersions and additives in aqueous media).

## FINISH (PROTECTIVE LAYER):

Our protector was developed specifically for our products. Tests to dangerous substances have shown that heavy metals compounds, formaldehyde and volatile organic compounds (VOC's) are not detectable, not compromising human health and the environment.

- Water resistant
- Resistance to scratches, stain and dirt
- Abrasion resistance - Abrasion Resistance of Textile Fabrics Test (ASTM 3884-92; Taber test: 500g, CS17) > 8000 Cycles



## PROPERTIES



## DECORATIVE CORK TYPES :

- Cork boards (100% natural product)
- Hydrophobic protector for Cork (Mixture of surfactants, additives and organic solvents in an aqueous solution)

Natural Cork



- Cork boards (100% natural product)
- Hydrophobic protector for Cork (Mixture of surfactants, colorants, pigments and additives in organic solvents)

Natural Colored Cork



- Granulated or decorative cork (100% natural product)
- Binder for cork
- Hydrophobic protector for Cork (Mixture of surfactants, additives and organic solvents in an aqueous medium)

Agglomerated Cork



## CORK VS LEATHER

Also known as cork leather, cork fabric is much more than the best “animal free” substitute for leather. Cork fabric’s uses are more versatile than those of leather and its looks are more diverse.

Cork fabric is a **vegan product**, PETA approved, and very often preferred to leather for that reason.

Unlike leather, we can have many **different patterns** and looks and other characteristics, like thickness, are also **customizable**.

Cork fabric is at least as durable as leather; some tests show that it is even more durable than some types of leather. The unusual chemical and physical characteristics of cork allow remarkable wear resistance and admirable degradation rates if exposed to acid. The manufacturing process reinforces these natural features and the protector makes cork fabric incredibly resistant to wear.

We believe that cork fabric may represent much more than an eco-friendly and vegan leather alternative. The endless opportunities it carries show us that it may not only be used as leather but also inspire many new products.

## THE ADHESIVE

We use a water-based adhesive (mixture of copolymer dispersions and additives in aqueous media).

## FINISH (PROTECTIVE LAYER):

Our protector was developed specifically for our products. Tests to dangerous substances have shown that heavy metals compounds, formaldehyde and volatile organic compounds (VOC's) are not detectable, not compromising human health and the environment.

- Water resistant
- Resistance to scratches, stain and dirt
- Abrasion resistance - Abrasion Resistance of Textile Fabrics Test (ASTM 3884-92; Taber test: 500g, CS17) > 8000 Cycles



**Create & Be Eco**



---

Coflora.org

Tel. +31 6 26 27 12 81

Email: [askcork@coflora.org](mailto:askcork@coflora.org)

KVK 83711244

NL003866494B86